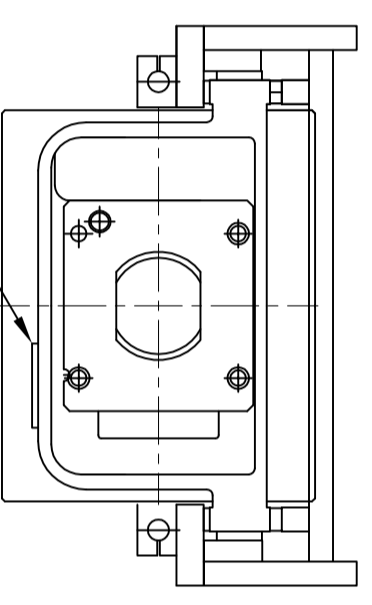


**Blanking Operation - As per SEW recommendation, the maximum blanking load on the press should not exceed 60% of the press rated capacity when the working load is uniformly distribute in the bolster covering minimum 65% of central area**



<b>SEW</b> SPECIFICATION OF SNX-35 TONNE [GEARED]	
PRESS CAPACITY IN TONNE	35 Tonne
STROKE LENGTH [FIX]	90 mm
TONNAGE RATING POINT [B.D.C.]	3.2mm
SLIDE ADJUSTMENT	50mm
SLIDE AREA [LRxRB]	380x300 mm
DIE HEIGHT [SDAU]	250 mm
BOLSTER AREA [LRxFB]	780x400mm
BOLSTER THICKNESS	85 mm
THROAT DEPTH	210 mm
CLEAR DIST. BETWEEN UPRIGHTS	490 mm
MAIN MOTOR [HP x RPM]	3x4P
MACHINE SPM.	80
FLOOR TO TOP OF BOLSTER	800 mm
OVER LOAD SAFETY	HYD. OVER LOAD
LUBRICATION	MOTORISED.
CAM LIMIT SWITCH	ENCODER BASE E-CAMS

VARIABLE	
MACHINE SPM.	60~90
MAIN MOTOR [HP x RPM]	5X4P
DIE CUSHION (OPTIONAL)	
PNEUMATIC DIE CUSHION	3.5 Tonne.
DIE CUSHION STK. LENGTH	50 mm
DIE CUSHION PAD AREA	300X210 mm

**NOTE : AS PER SEW RECOMMENDATION, THE MAXIMUM BLANKING LOAD ON THIS PRESS SHOULD NOT EXCEED 60% OF THE PRESS CAPACITY.**

REV.	DESCRIPTION	SIGN	DATE	NAME OF M/C	SNX-35	QTY.	01
	SCALE			N.T.S.	SURFACE FINISH		
	DATE			15-9-22	0.8	1.6	3.2
	DRAWN			DG			***
	CHKD.			RK			
	APPD.			RK			
	PROJECTION			RK			
	NAME						

**SEW SINGHAL**  
POWER PRESSES PVT.LTD

**G.A. DRAWING**  
DRG.NO. SNX-35-SG-FS-08