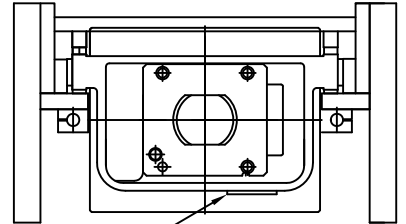


**SPECIFICATION OF SNXR-200 TONNE [GEARED]**

- PRESS CAPACITY IN TONNE ----- 200 Tonne
- STROKE LENGTH [FIX.] ----- 220 mm
- TONNAGE RATING POINT [B.D.C.] - 6 mm
- SLIDE ADJUSTMENT ----- 120 mm [MOTORISED]
- SLIDE AREA [LRxRB] ----- 860x650 mm
- DIE HEIGHT [SDAU] ----- 450 mm
- BOLSTER AREA [LRxFB] ----- 1250x840 mm
- BOLSTER THICKNESS ----- 180 mm
- MACHINE SPM. (FIXED) ----- 35
- MAIN MOTOR [HP x P] ----- 20x4P
- MACHINE SPM. (VARIABLE) ----- 25~45
- MAIN MOTOR [HP x P] ----- 25x4P
- FLOOR TO TOP OF BOLSTER ---- 1000 mm
- OVER LOAD SAFETY ----- HYD. OVER LOAD
- LUBRICATION ----- MOTORISED GREASE LUB.
- CAM LIMIT 8 POINT IMPORTED

**DIE CUSHION (OPTION)**

- PNEUMATIC DIE CUSHION ----- 14 Tonne.
- DIE CUSHION STK. LENGTH ----- 110 mm
- DIE CUSHION PAD AREA ----- 640x440 mm



DIE HEIGHT IND.[IMPORTED.]  
SIX POINT GIBBING

				SCALE		WEIGHT(KGS)
				DATE	16/01/2020	NAME :  <b>G.A.DRAWING</b>
				DRAWN	CHIRAG	
				CHKD.	VR	
				APPD.	VR	
REV.	DESCRIPTION	SIGN	DATE	PROJECTION		DRG.NO. <b>SNXR-200-SG-FS-08</b>
				<b>SINGHAL</b> POWER PRESSES PVT.LTD		